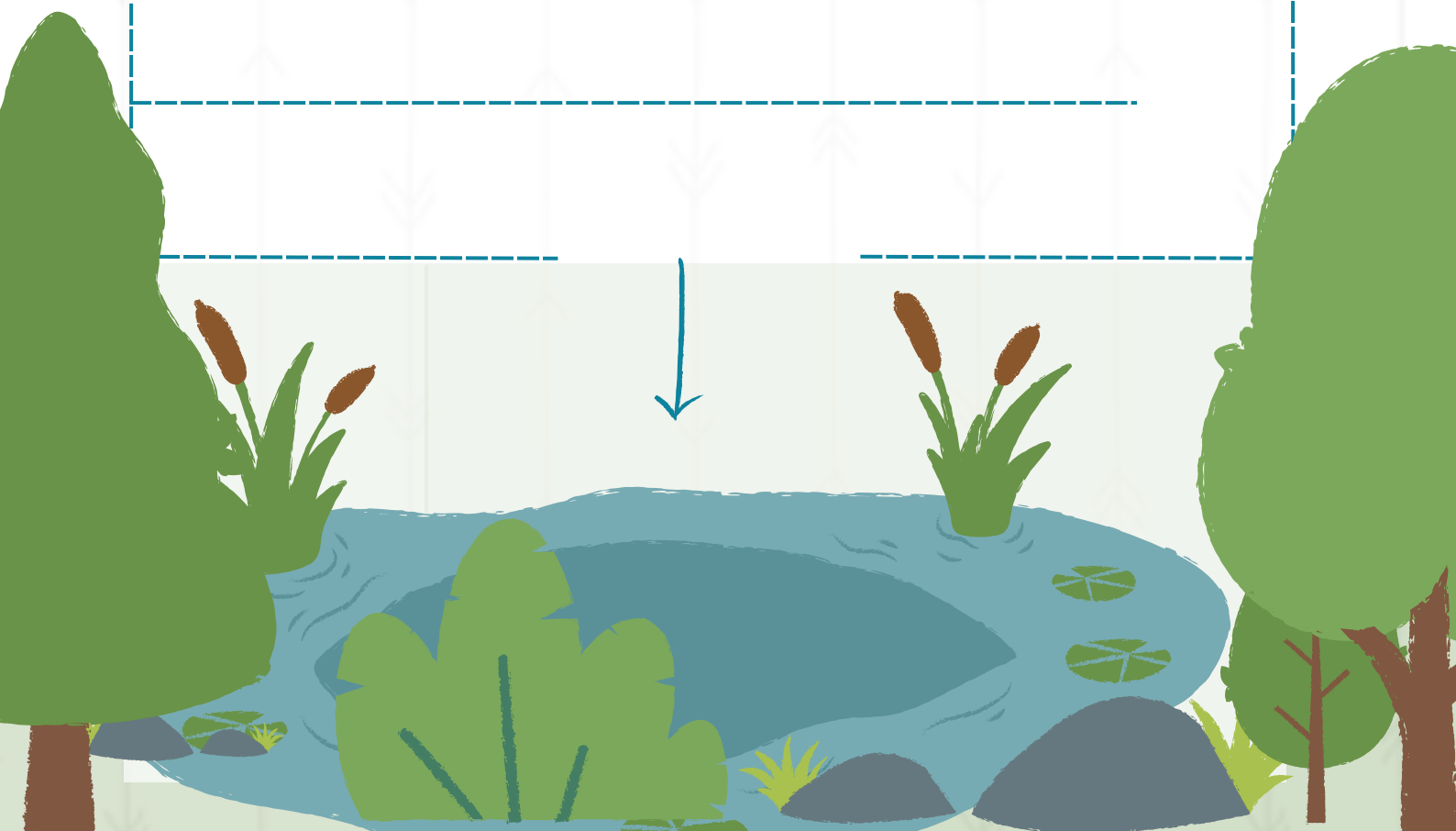




FISHERMAN AND HIS FRIEND CRAB ARE GOING  
TO THE POND, CAN YOU HELP THEM?

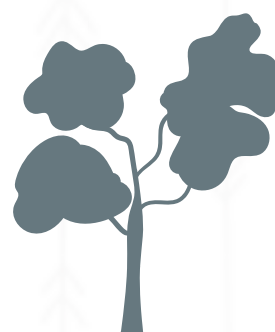
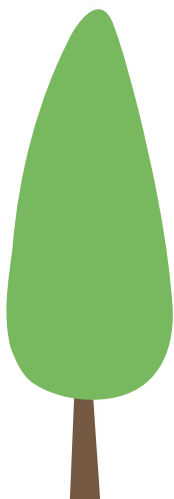
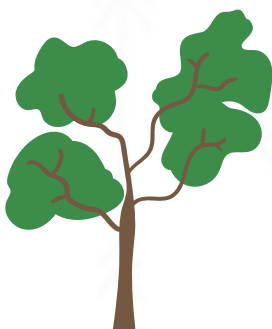


The diagram consists of a vertical dashed line on the left side. Four horizontal dashed lines extend to the right from the vertical line at different heights. A blue arrow points to the right, positioned above the topmost horizontal dashed line.

[illegible]



CAN YOU HELP FISHERMAN AND HIS  
FRIEND CRAB WITH MATCHING PAIRS?



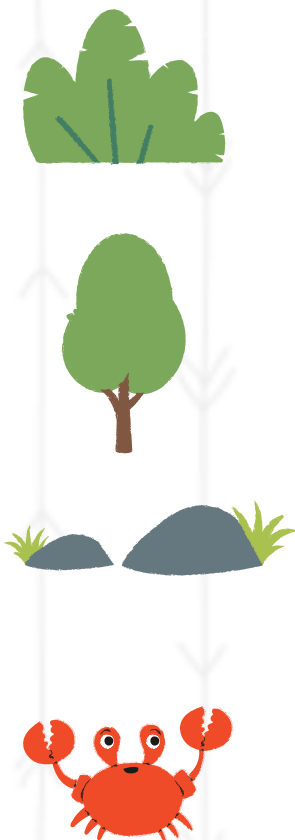
FISHERMAN AND HIS FRIEND CRAB ARE GOING  
TO THE POND. HOW MANY TREES DO THEY SEE  
DURING THEIR WAY?





FISHERMAN IS COUNTING THINGS AROUND  
THE POND, CAN YOU HELP HIM?

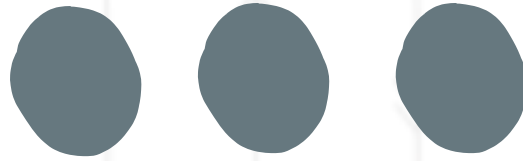
FIND, COUNT AND  
WRITE DOWN  
USING DOTS:



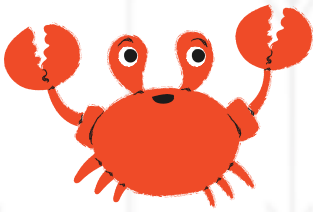




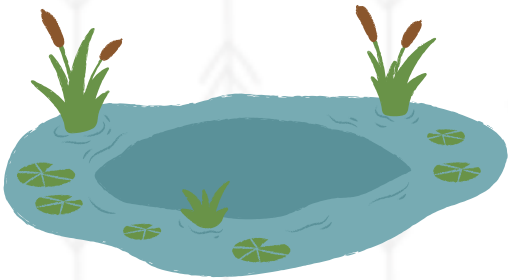

CLAP OUT:



FISH - ER - MAN



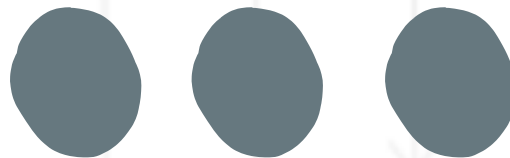
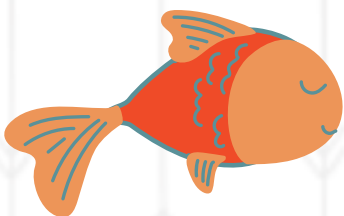
CRAB



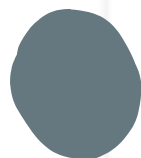
POND



TREE



LI - Ttle - FISH



STONES